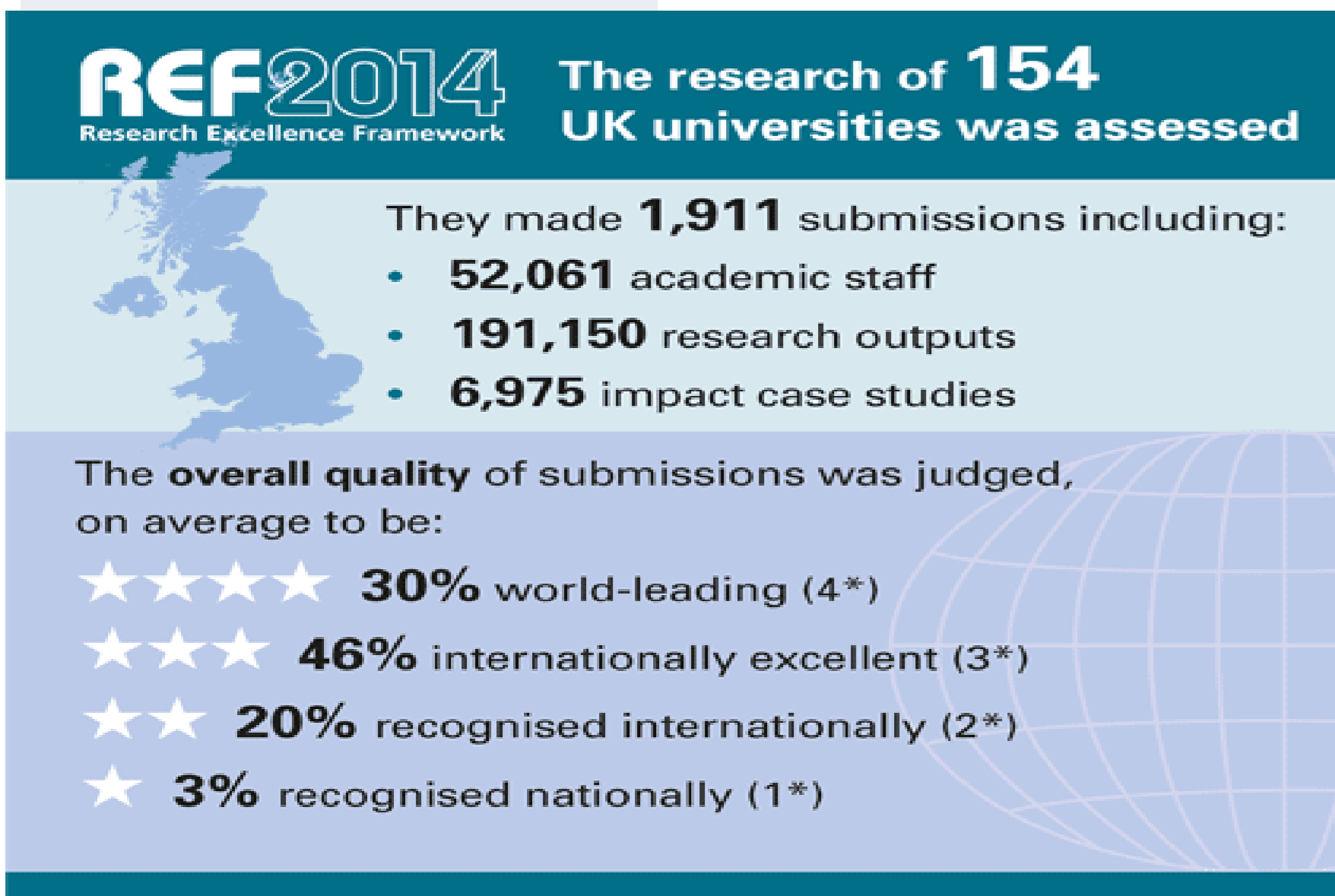


Are Humanities failing to generate Impact?

Dorothea Sturn, Zentrum für soziale Innovation, Vienna, sturn@zsi.at
Keywords: Humanities, Impact statements, UK REF

Impact of Social Sciences and Humanities for a European Research Agenda, Pillar 3: Assessing Impact
I am particularly grateful for the assistance given by Jakob Sturn

Background



Source: REF 2014

The UK REF (Research Excellence Framework) is the system for assessing the quality of research in UK higher education institutions.

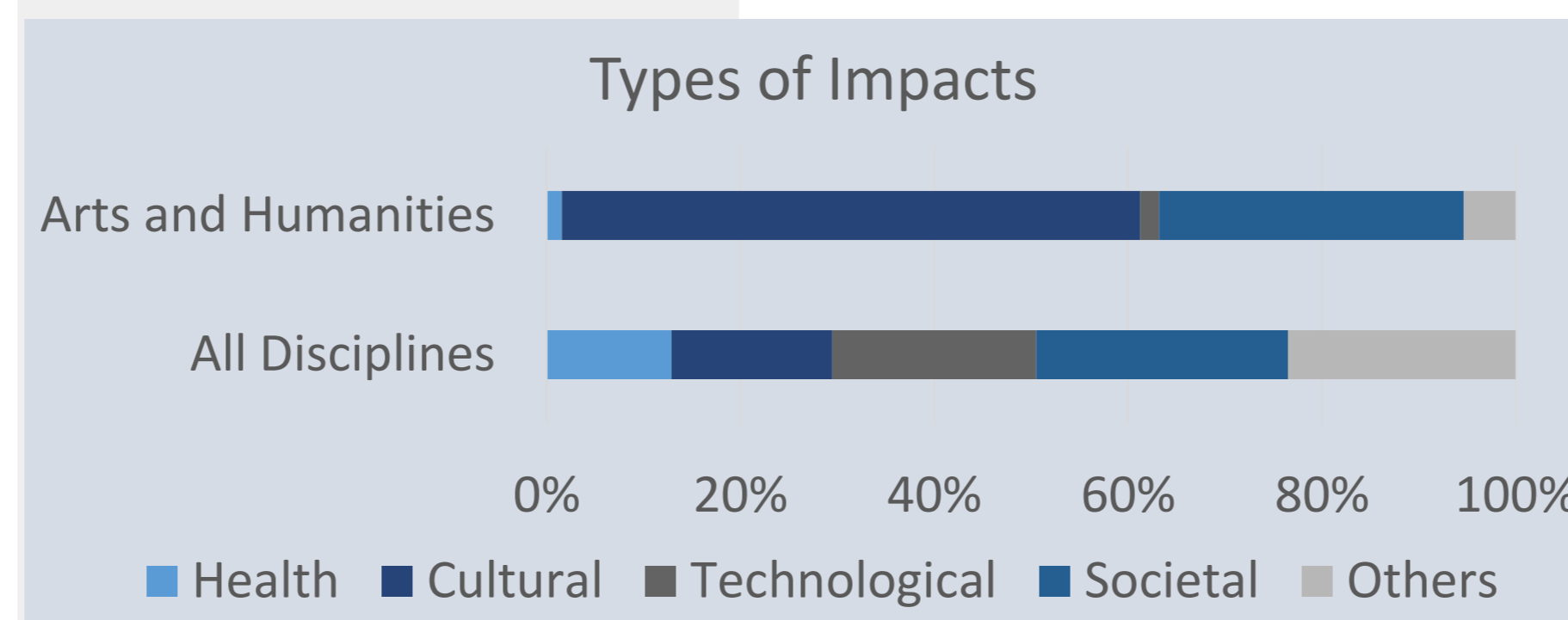
REF was initially proposed as a metrics-based evaluation to replace the Research Assessment Exercise (RAE). It was intended to reduce the administrative burden and to better present the economic and societal contribution of research (Martin 2011). However, after strong resistance from the academic community, HEFCE gave up on the switch to a bibliometrics based assessment.

A new element was introduced, however, namely narratives on **impacts reached**, to be drafted by the assessed institutions. Impact is defined “as an effect on, change or benefit to the economy, society, culture, public policy or services, health, the environment or quality of life, **beyond academia.**” (HEFCE 2014, my emphasis) This means that academics are asked to show the value of their work beyond how it perpetuates the research system itself.

REF 2014 assessed nearly 7000 impact cases that cover all research areas and are grouped into the four main disciplines of Life Sciences, Sciences, Social Sciences, Arts and Humanities. The cases are published: <http://impact.ref.ac.uk/CaseStudies/>

Impacts and Outputs

REF 2014 recognises eight different types of impact: political, legal, health, cultural, technological, societal, economic and environmental. The two most important types are **technological and societal impacts**, which added together account for nearly half of all cases. Humanities show a different pattern of impact types: Cultural impacts dominate, whereas technological impacts are marginal (mostly eHumanities or computational linguistics).



Own calculation, Data Source: Impact Case Studies

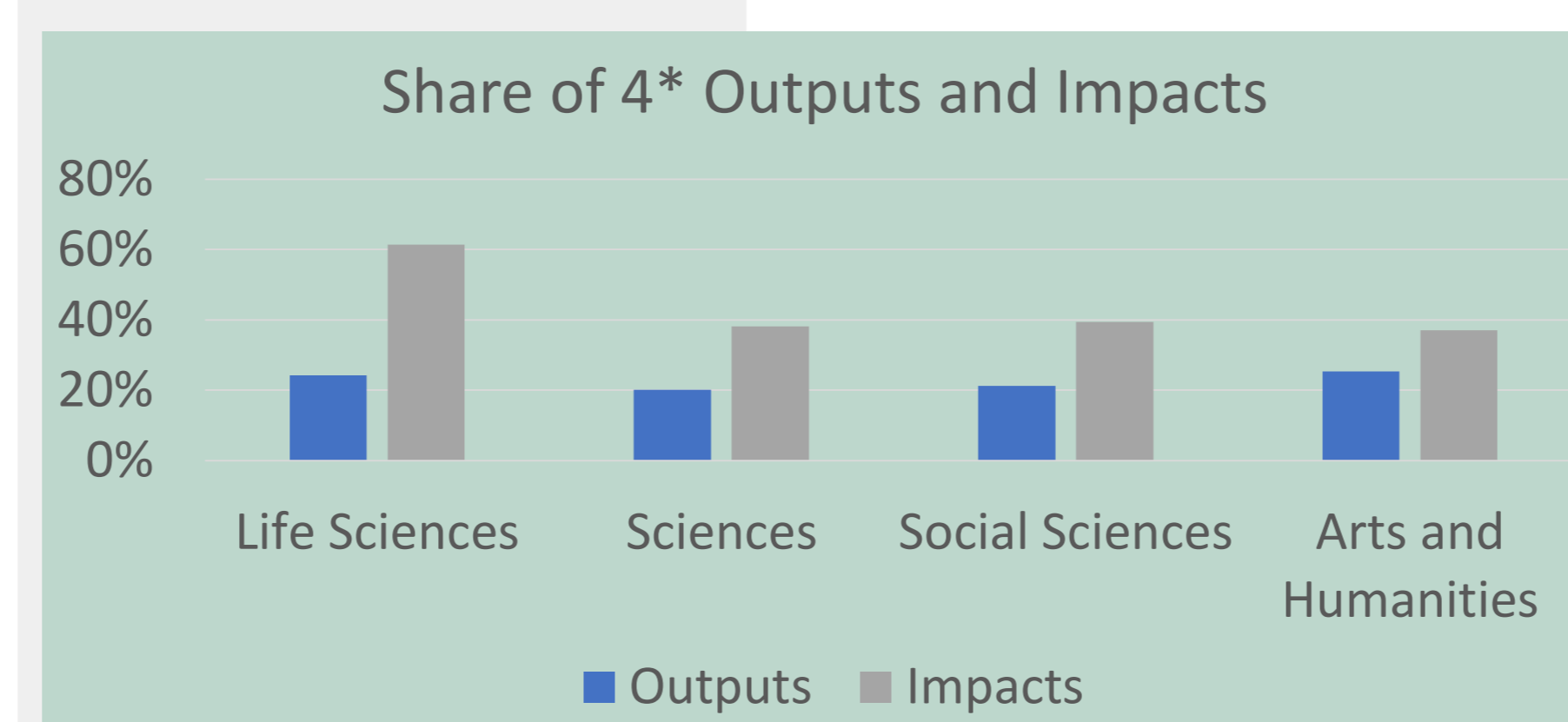


“REF documents are written in the unlovely technocratic language of generic templates, impact sub-profiles, and submitted units, which turn out to be people like me, **who put 30 years [of] work into a single book**” (Robert Hewison, speech at a conference 2011, cited by Bulaitis (2017, p 5).

Successful disciplines

The picture shows the share of best (“outstanding” = 4*) assessed impact and output in the four main discipline groups:

- Impact generally scores higher than output (publications and other academic outputs)
- The Life Sciences score very highly on impact (esp. clinical medicine)
- Arts and Humanities show remarkably good results on outputs but fail to receive outstanding impact



Own calculation, Data Source: Times Higher Education 2014

4* Impacts

Characteristics of high-scored impacts

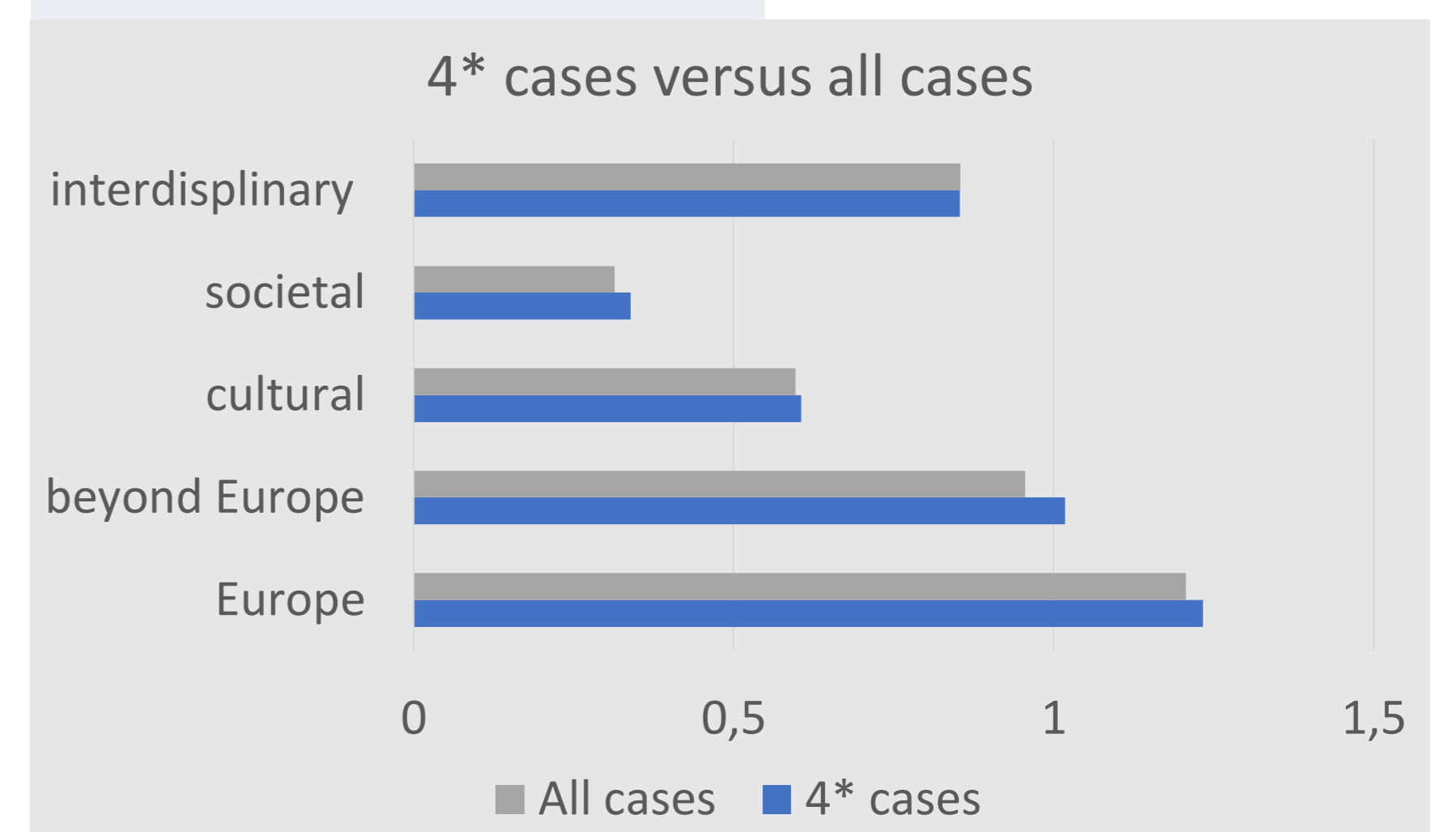
Are there any **simple recipes how to produce a 4* impact**? Considering the substantial financial consequences of the ratings (Reed et al 2017 calculate “something like £324,000 for the most significant and far-reaching impacts”), it was only obvious that innumerable recommendations were offered on how to produce a high-score impact case (see eg Reed et al 2018). In the last two years, researchers across the UK have been mining and analysing the REF 2014 data to learn what was considered best practice.

Some findings:

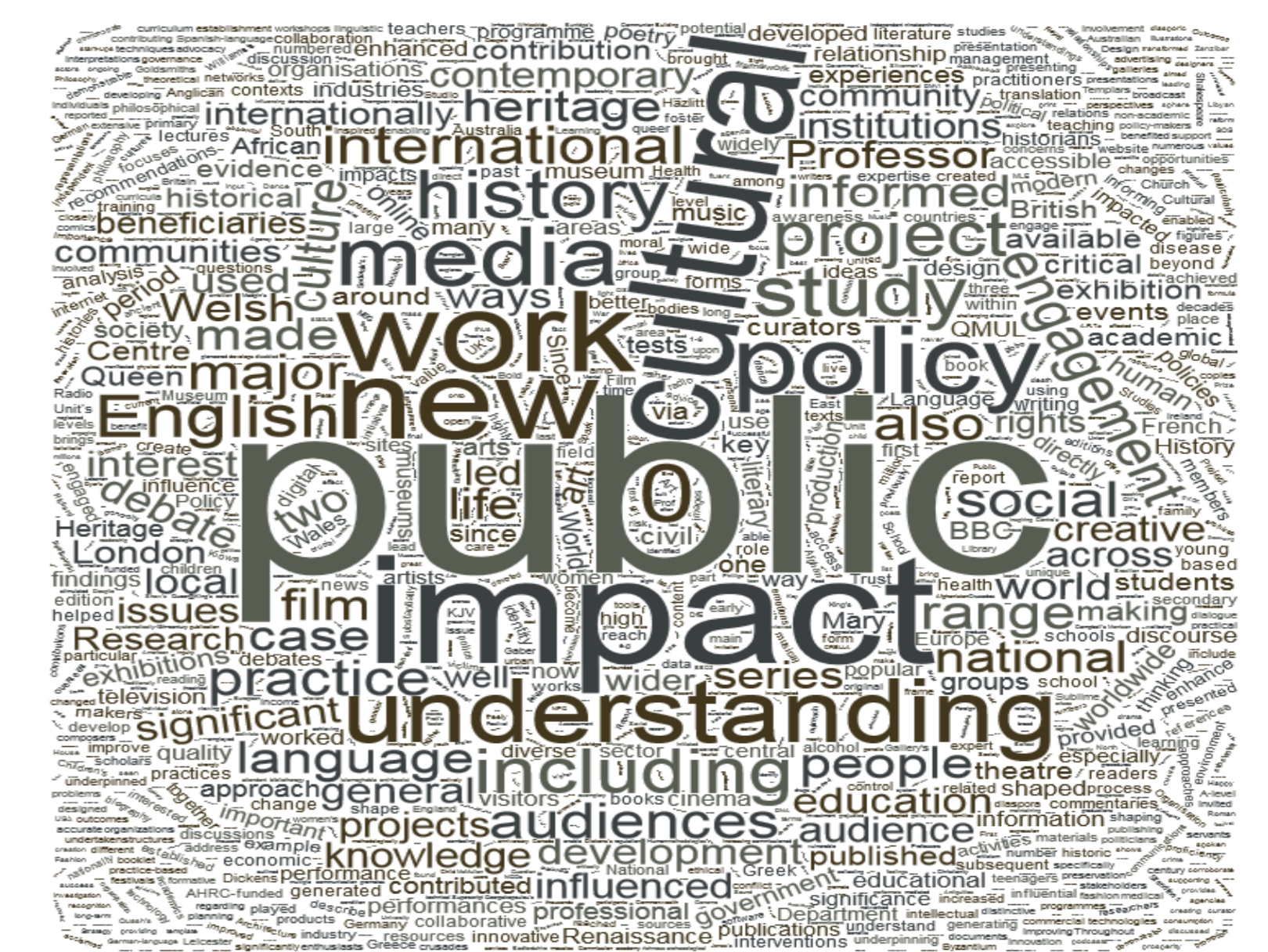
- Benefits should be articulated as concretely as possible (specific groups, significance and reach)
- Research (high score) and impact should be connected properly
- Impact statements should be written in a clear and plain language

Nevertheless, my own calculation for the Arts and Humanities shows no difference between 4* impact cases (200 cases randomly picked) and the total amount of impact cases in the discipline group according to:

- The type of impact
- The spread of impacts over the world
- The share of interdisciplinary cases



Own calculation, Data Source: Times Higher Education 2014, Impact case Studies



“scholars in British universities will devote less time and energy to this attempt [to deepen our understanding of “Humanities”], and more to becoming **door-to-door salesmen for vulgarized versions of their increasingly market-oriented “products.”** (Collini 2009)



References

- Barr, K, Langsdale, S (2015) The Humanities in an Age of Impact <https://www.thesciologicialreview.com/blog/the-humanities-in-an-age-of-impact.html> accessed 09/06/2018
- Bornmann, L (2013) What is the societal impact of research and how can it be assessed? A literature survey. *Journal of the American Society of Information Science and Technology* 64, 217–233.
- Bulaitis Z (2017) Measuring impact in the humanities: Learning from accountability and economics in a contemporary history of cultural value. *Palgrave Communications* 3/7 <https://www.nature.com/articles/s41599-017-0002-7> accessed 09/06/2018.
- Chowdhury G, Koya K, Philipson P (2016) Measuring the Impact of Research: Lessons from the UK's Research Excellence Framework 2014. *PLoS ONE* 11(6): e0156978. doi:10.1371/journal.pone.0156978
- Collini, S. (2009) Impact on humanities: Researchers must take a stand now or be judged and rewarded as salesmen. *Times Literary Supplement*. November 13 2009.
- Derrick, G, Samuel, G (2016). The Evaluation Scale: Exploring Decisions About Societal Impact in Peer Review Panels. *Minerva* 54, 75–97.
- Hazelkorn, E (2015) Making an impact: New directions for arts and humanities research, *Arts and Humanities in Higher Education*, 14(1):25–44. <https://doi.org/10.1177/1474022214533891> accessed 09/06/2018.
- HEFCE. (2012) Policy Guide. REF impact <http://www.hefce.ac.uk/rsrch/REFImpact/> accessed 09/06/2018. Note that HEFCE closed at the end of March 2018.
- Martin, B (2011) The Research Excellence Framework and the ‘impact agenda’: are we creating a Frankenstein monster? *Research Evaluation* 20, 247–254.
- Reed MS, Kerridge S (2017). How much was an impact case study worth in the UK Research Excellence Framework? *Fast Track Impact* https://www.fasttrackimpact.com/single-post/2017/02/01/How-much-was-an-impact-case-study-worth-in-the-UK-Research-Excellence-Framework?fb_comment_id=1001517196621718_1060554310718006 accessed 09/06/2018
- Reed MS, Reichard B, Chubb J, Hall G, Jowett L, Peart A (in prep.) What made a 4* impact case study in REF2014? Submitting to *Palgrave Communications* Online version with sharable infographic available at: www.fasttrackimpact.com/blog accessed 09/06/2018
- REF 2014. <http://www.ref.ac.uk/2014/>, accessed 09/06/2018
- Stern, Lord N (2016) *Building on Success and Learning from Experience. An Independent Review of the Research Excellence Framework*. <https://www.gov.uk/government/publications/research-excellence-framework-review> accessed 09/06/2018.
- Times Higher Education (2014) REF 2014: results by subject <https://www.timeshighereducation.com/features/ref-2014-results-by-subject/2017594.article> accessed 09/06/2018
- Wang, J, Hicks, D (2013) Detecting structural change in university research systems: A case study of British research policy. *Research Evaluation* 22, 258–268.

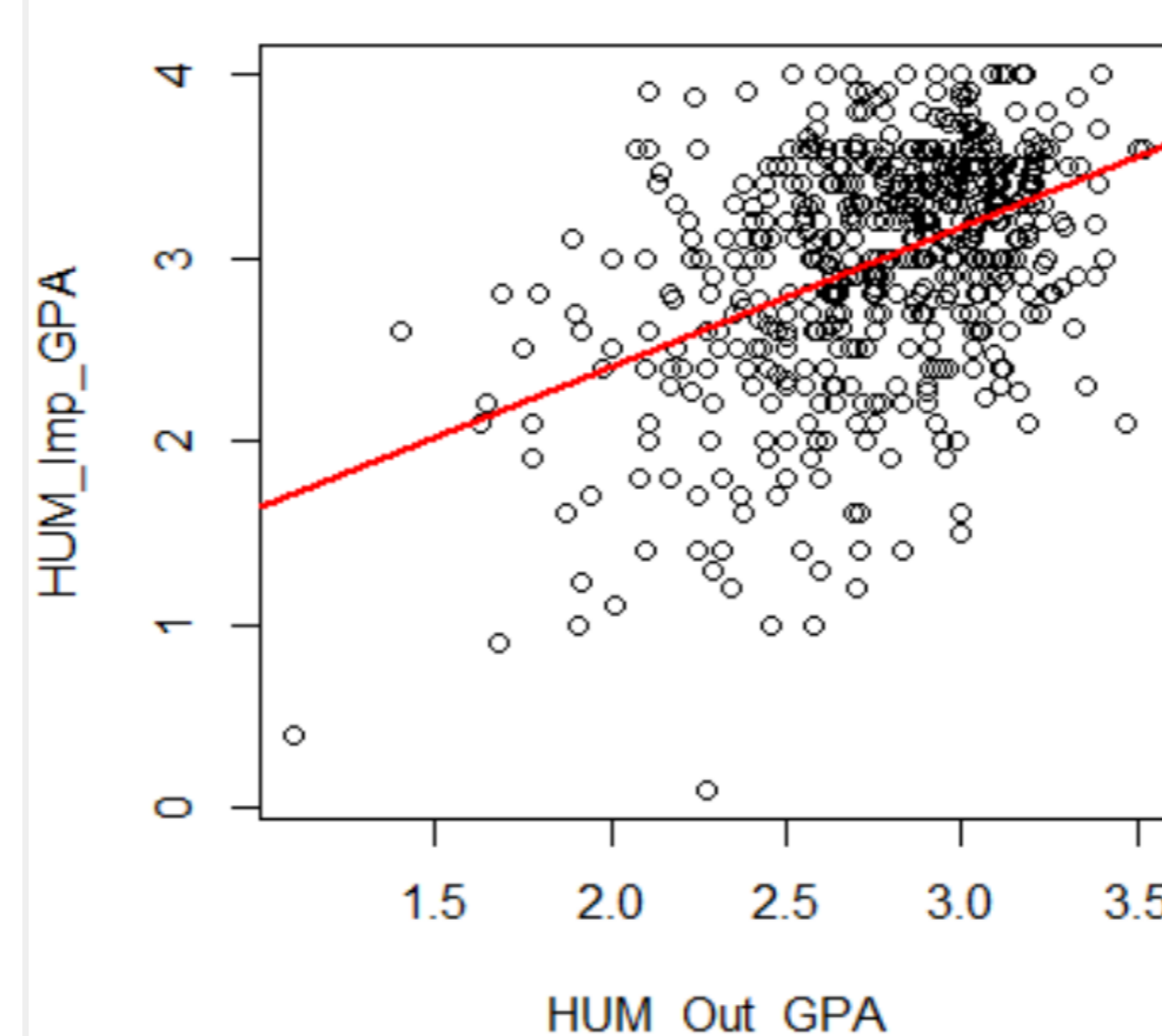
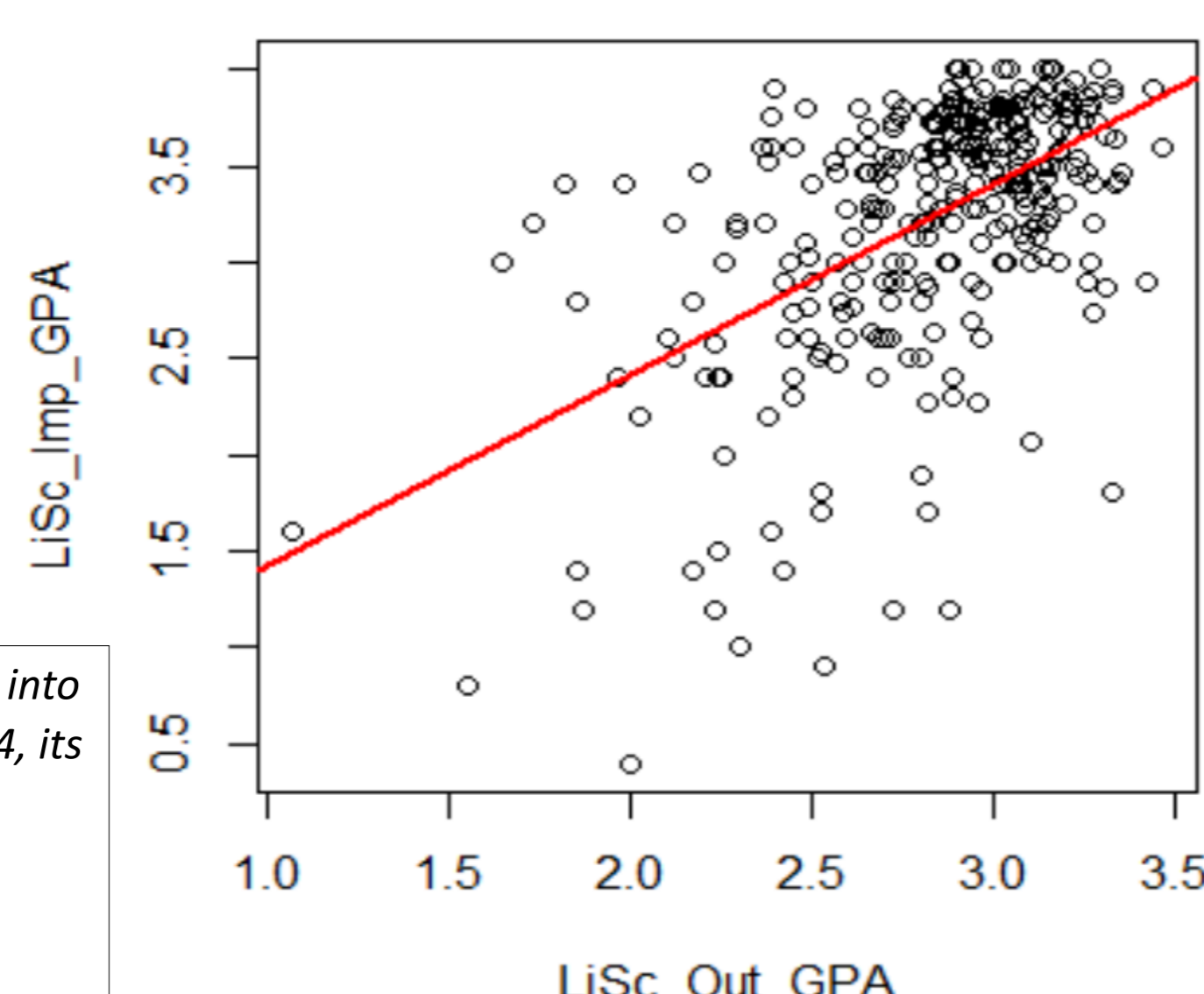
Using this data base as a starting point, the paper investigates the following questions:

1. Do various disciplines produce different types of impacts?
2. Are some disciplines more successful than others?
3. Is output and impact interconnected in a way that applications with highly rated outputs receive high scores for impacts as well?
4. Do high-scored impacts show characteristics different from the total amount of impacts?



Source: <https://theblacksheeponline.com/uc-santa-barbara/ucsb-study-suggests-humanities-are-soft-and-useless>

Each assessment unit’s quality profile is converted into GPA by multiplying its percentage of 4* results by 4, its percentage of 3* results by 3, its percentage of 2* results by 2 and its percentage of 1* results by 1; added together and divided by 100 to give a score between 1 and 4.



Own calculations, Data Source: Times Higher Education 2014