

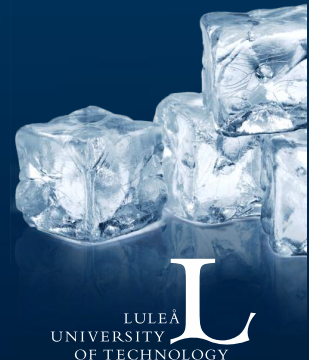


INCLUSIVE FUNDING

FOR ENHANCED IMPACT OF SOCIAL SCIENCES AND HUMANITIES

Malin Lindberg, Luleå University of Technology
Svetlana Gross, Stockholm School of Economics
Milda Rönn, Humsamverkan
Lissa Nordin, Formas
Jan Sandred, VINNOVA
Lars Wärngård, Forte
Catharina Norberg, Energimyndigheten

Sweden





What

Analysis of a process of designing digitalized tools for inclusive funding, involving four Swedish funding agencies and an NGO of SSH researchers

Why

Expand the knowledge on how societal impact of social sciences and humanities (SSH) can be enhanced through public funding of research and innovation

How

Participatory research design with joint knowledge development by researchers and funding agencies



Open Science & Open Innovation
Responsible Research & Innovation (RRI)
Science with and for Society (SwafS)
Mission-Oriented R&I Policy



HORIZON 2020

Impact, Innovation, Interaction

HUM⁺
SAM
VERKAN



1 NO
POVERTY



2 NO
HUNGER



3 GOOD
HEALTH



4 QUALITY
EDUCATION



5 GENDER
EQUALITY



6 CLEAN WATER
AND SANITATION



7 RENEWABLE
ENERGY



8 GOOD JOBS AND
ECONOMIC GROWTH



9 INNOVATION AND
INFRASTRUCTURE



10 REDUCED
INEQUALITIES



11 SUSTAINABLE CITIES
AND COMMUNITIES



12 RESPONSIBLE
CONSUMPTION



13 CLIMATE
ACTION



14 LIFE BELOW
WATER



15 LIFE
ON LAND



16 PEACE AND
JUSTICE



17 PARTNERSHIPS
FOR THE GOALS



THE GLOBAL GOALS
For Sustainable Development

The background of the slide is a blue-tinted image of a shipwreck. The ship's hull and masts are visible, partially submerged in the water. Large icebergs are floating in the background, and the water is calm, reflecting the scene. The overall tone is somber and historical.

Challenge

Shared challenge to attract a broader range of SSH researchers to apply for R&I funding, to enhance insights and innovations for societal challenges

Solution

Identify excluding/including mechanisms towards SSH researchers in calls for funding
Develop digital tools to guide the design of inclusive calls

The call process

Topdown/Bottomup
Team formation
Purpose(s)

Initiation

Problem descriptions
Disciplinary terms
Priority order

Formulation

Contact networks
Channels
Purpose, terms, order

Communication

Evaluation criteria
Review committees
Motivations

Decision



Representation



Call texts



Interactions

The digital tools

Guide the user through queries regarding:

Present and potential diversity among applicants, reviewers, agency staff, etc.

Formulation and communication of call texts, assessment criteria and reviewer instructions

1

What do we miss out?

Guiding questions about
who/what we might have missed

2

What is the reason?

Guiding questions about possible
causes

3

What can we do?

Guiding questions about possible
solutions



Conclusions

By underlining the need for simultaneous changes of practical call design and strategic organizational frameworks, the developed tools reflect the crucial interplay between established procedures/norms and individual/collective empowerment in societal impact

When attempting to make the funding more inclusive towards underrepresented groups, conflicts may arise in relation both to other missions and tasks of the agencies, and to conservative attitudes among agency managers, staff and other stakeholders

Neither the identified mechanisms nor the designed tools consider how SSH impact may be enhanced through concrete interaction with users/stakeholders from various societal sectors

